



R BUCE WEST

Research Based University Chairs of Excellence - West France

GUIDE FOR APPLICANTS

RBUCEWEST-2011-03

Opening date: 22 July 2011 at 5:00pm Closing Date: 25 September 2011 at 12.00am (Paris time)

This program is managed by the UEB (Université Européenne de Bretagne)



UNIVERSITÉ
EUROPÉENNE
DE BRETAGNE



This program has received funding from the Research Executive Agency under the 7th Framework program (2007-2013) under grant agreement n° 246554 (FP7-PEOPLE-COFUND 2008)



Contents

1 What is R BUCE WEST?	3
2 Who can apply?	3
3 Which research topics are supported?	4
4 How long lasts the fellowship?	5
5 How much will the fellow be paid?	5
6 How to apply?	7
7 Contact	8
8 Application submission	8
9 Practical information	8
10 The selection process for fellows under the program	9
10.1 Short overview of the selection process	9
10.2 Selection of the applicants	10
10.3 Information for the applicants about the evaluation results	12
11 Expected timeline	13

1 What is R BUCE WEST?

R BUCE WEST means Research-Based University Chairs of Excellence-WEST France.

The R BUCE WEST program supports research in Brittany. Fundamentally based on individual fellowships applications, the R BUCE West program provide funding for the implementation of 51 Chairs of Excellence for both senior and junior researchers, all in international mobility position for a two-year period in Brittany (Western France).

The program launched by the PRES (Higher Education and Research Cluster) UEB, is open to wide research topics.

2 Who can apply?

– Junior and senior fellow researchers from all nationalities

Junior researcher must, at the time of the relevant deadline for submission of the application (25 September 2011), depending on the action,

- either be in possession of a doctoral degree, irrespective of the time taken to acquire it,
- or have at least four years of full-time equivalent research experience. This is measured from the date when the researcher obtained the degree which would formally entitle her/him to embark on a doctorate, either in the country in which the degree was obtained or in the country in which the research training is provided, irrespective of whether or not a doctorate is envisaged.

Senior researcher represents the senior fellow who has more than 10 years of research experience .

– Researchers showing trans-national mobility

Researchers must not have resided or carried out their main activity (work , studies, etc) in France for more than 12 months in the 3 years immediately prior to the call for applications deadline (25 September 2011). Compulsory national service and/or short stays such as holidays are not taken into account. (According to the 2011 People work program).

French citizens living abroad are not excluded if they can show transnational mobility.

Examples:

Applicants complying with the mobility rule

A) An experienced researcher moving from Algeria who has resided and worked in France for less than 12 months in the 3 years immediately prior to the deadline for application submission may apply for a fellowship in France.

B) An experienced French researcher moving back from Canada where he has been living for the last 3 years, may apply for a fellowship.

Applicants ineligible as experienced researchers

A/ A researcher who used to live and work in France for the last 3 years is not eligible.

B/ A researcher from Turkey who has worked in France for 13 months during the last 3 years is not eligible.

Fellow is the eligible experienced researcher who has been awarded the R BUCE WEST fellowship in the *host organization*.

– **No language requirements**

There is no specific language requirements. However, fluency in English, and a basic knowledge of French will be appreciated.

– **Researchers currently holding a Marie Curie grant cannot apply**

A researcher who currently holds a Marie Curie fellowship grant, cannot apply as long as she/he still holds the Marie Curie fellowship.

A researcher who has been awarded a Marie Curie grant in the past, but whose fellowship is over, may apply for a R BUCE WEST fellowship.

Applicants may apply for each call for proposals published by the UEB. There is no restriction concerning the number of individual applications.

3 Which research topics are supported?

The R BUCE WEST program has a bottom-up approach, i.e. research fields are chosen freely by the applicants. However, fellows will be partially recruited if projects crosscheck thematic priorities or specific key-words ex ante posted by host institutions (according to the R BUCE WEST program, Annex 1, Grant Agreement 266554).

For the second call for applications, fellowships are being offered:

Thematic priorities/specific key-words posted by the host institutions	Number of fellowships offered	Type of fellowship : Junior Senior Researchers	Host Institutions
“Signal processing, digital communications, device architecture”	1	Junior	Telecom Bretagne
“Information technology for health, including imaging, indexing, health information systems” or “Information technology including network, signal processing, electronics”	1	Junior	Telecom Bretagne
“Information technology including networks, signal processing, electronics”	1	Junior/Senior	Telecom Bretagne
“Materials, Health, Environment”	1	Junior	ENSCR
“Crop and Livestock production, Food”	1	Senior	Agrocampus Ouest
“Sea, Environment, Landscape”	1	Senior	Agrocampus Ouest
“Biomathematics, Biostatistics”	1	Senior	Agrocampus Ouest
“Statistical approaches for electromagnetic modelling”	1	Junior/Senior	INSA Rennes

“Materials and Structures”	1	Junior	ENSTA Bretagne
“Biostatistics”	1	Junior	ENSAI
Total	10	3 Seniors, 5 Juniors, 2 open	

Host institutions participating in the second call for applications R BUCE WEST-2011-02

Host organization (return host organization/contracting organization) is the legal entity established in Brittany (France) with which the UEB will sign a letter of commitment. The host organization will also host the fellow researcher for the two-year mobility period.

- TELECOM Bretagne
A graduate engineering school and international research centre in the field of information technologies
http://www.telecom-bretagne.eu/index.php?lang=en_GB
- Ecole Nationale Supérieure de Chimie de Rennes
Engineering school
<http://www.ensc-rennes.fr/english/>
- AGRO CAMPUS OUEST
Engineering school
http://www.agrocampus-ouest.fr/infoglutDeliverLive/digitalAssets/12949_AO-GB-web.pdf
- Institut National des Sciences Appliquées de Rennes
Public Engineering School
<http://www.insa-rennes.fr/?LangueID=2>
- ENSTA Bretagne - National School for Advanced Techniques based in Brittany
Engineering school
<http://www.ensta-bretagne.fr/en/index.php/presentation/>
- ENSAI National School for Statistics and Information Analysis
http://www.ensai.com/presentation-et-visite-virtuelle-rub_9.html

4 How long lasts the fellowship?

All fellowships are set up for a fixed period of time, i.e. 24 consecutive months. This duration cannot be modified. The 2-year fellowship corresponds to a full-time equivalent job.

5 How much will the fellow be paid?

The data below gives the annual gross salary cost including employer contributions for seniors and juniors.

- **Living allowance:**

Type of fellowship	Junior	Senior
Gross salary cost including employer contributions per year	From 0 to 5 years of research experience = 41 500 €	From 10 to 15 years of research experience = 86 000€
Gross salary cost including employer contributions per year	From 5 to 10 years of research experience = 66 560 €	From 0 to 5 years of research experience = 107 000€

The living allowance corresponds to the annual gross salary including employer contributions for one year of fellowship.

The living, mobility, travel, and research cost contributions allowances will be paid each year to the researcher by the host organization. The research costs contribution will be invested directly by the researcher.

- **Additional grants**

In addition to his/her salary, the fellow researcher will receive:

- an annual mobility allowance
- an annual travel allowance
- an annual research allowance

Gross salary including employer contributions for one year of fellowship	Junior Researcher (< 10 years of research experience)	Senior Researcher (>10 years of research experience)
Living allowance	[0 to 5 years of research experience] =41 500 € For fellows with less than 5 years of experience: the gross salary including employer contributions will be based on that of an associate professor, grade II, i.e. 41.500€/year.	[10 to 15 years of research experience] =86 000 € For fellows from 10 to 15 years of experience: the gross salary including employer contributions will be based on that of a Professor (1 st class, grade IV), i.e. 86.000€/year.
	[5 to 10 years of research experience] =66 560 € For fellows with more than 5 years of experience: the gross salary including employer contributions will be based on associate professor grade IX, i.e. 66.560€/year.	[>15 years of research experience] =107 000 € For fellows with more than 15 years of experience: the upper limit for the gross salary including employer contributions will be based on Professor, exceptional class, grade I, i.e. 107.000€/year.
Mobility allowance	7 200 € or 10 800€ depending on your family status (see below)	7 200 € or 10 800€ depending on your family status (see below)
Travel allowance	250€ up to 2 500€ depending on the distance from your location of origin (see below)	250€ up to 2 500€ depending on the distance from your location of origin (see below)
Research cost contribution*	10 000 € or 20 000€ 10 000€ in Social Sciences	10 000 € or 20 000€ 10 000€ in Social Sciences

	20 000€ for exact sciences	20 000€ for exact sciences
--	----------------------------	----------------------------

Annual mobility allowance:

In addition to the living allowance, a gross mobility allowance will be paid by the host institution each month to the fellow researcher. This allowance is a flat rate contribution to cover personal household, relocation, family charges, language courses, etc).

There are 2 cases:

– 600€ per month for researchers with no dependants ($600€ \times 12 = 7\,200\,€$ a year)

–and 900€ per month for researchers accompanied by their partners (married, or under an equivalent status to marriage recognized by French legislation or by the researcher's national legislation, or dependent children who are actually being maintained by the researcher).

$900\,€ \times 12 = 10\,800\,€$ a year

Annual travel allowance: A gross travel allowance is paid to the researcher by the host institution once a year, and is based on the shortest distance between the place of origin and the host institution of the researcher.

*The **location of origin** means the place where the experienced researcher has resided or carried out his/her main activity for the longest period in the three years immediately preceding the deadline for application submission. The country of origin is the country in which the location of origin is situated.*

Less than 500 km = 250€/year

500km-1000km = 500€/year

1000km-1500km = 750€/year

1500km-2500km = 1000€/year

2500km - 5000km = 1500€/year

5000km - 10000km = 2000€/year

More than 10000km = 2500€ /year

This rate is empirically based on some host organizations' practices for People mobility actions and the promise that future incomers will be foreigners from far afield.

Research cost contribution

Research projects focused on human and social sciences : 10 000€/year (gross salary cost including employer contributions)	All other scientific topics : 20,000€ per year (gross salary cost including employer contributions)
--	---


A flat rate of € 10,000€ or 20,000€ per researcher, managed by the host organization, will be available for the fellow researcher to contribute to expenses related to the participation of researchers in training activities (conferences, workshops...) ; expenses related to research costs (publications, equipment...)


6 How to apply?

Applications must be submitted by email to rbucewest-2011-03@ueb.eu

Deadline: 25 September 2011 at 12:00am (Paris Time)

7 Contact

 UNIVERSITÉ EUROPÉENNE DE BRETAGNE	<p>Marie Pénet, European program Manager (in charge of R BUCE WEST implementation) 5 boulevard Laënnec – 35000 Rennes – France Phone number: +33 2 23 23 79 83, Fax number: +33 2 23 23 79 79 rbucewest@ueb.eu</p>
--	---

 UNIVERSITÉ EUROPÉENNE DE BRETAGNE	<p>Maurice Baslé R BUCE WEST legal coordinator UEB Vice-President in charge of International and European Affairs 5 boulevard Laënnec – 35000 Rennes – France</p>
--	--

8 Application submission

About the submission

Call deadlines are absolutely final and are strictly enforced.

Only complete applications will be evaluated.

Correcting or revising your application

Errors discovered in applications submitted by email can be rectified by simply sending a corrected version. So long as the call has not yet closed, the new submission will overwrite the old one.

Once the deadline has passed, however, the UEB can accept no further additions, corrections or re-submissions.

Withdrawing an application

Applicants may withdraw an application form by sending a revised version with an empty section, with the following words entered in the abstract field: "The applicant wishes to withdraw his/her application. It should not be evaluated by the UEB".

9 Practical information

- The successful fellow researcher will be covered either by a working contract from his home institution or by a French working contract.
- Employment conditions provided to successful fellows may depend on institutions (number of working hours per year, laboratory, number of paid holidays per year, etc), but it will not concern the salary, which is the same gross fixed amount for each host institution

- Selected fellows will be covered by a proper social security (health insurance, pension rights, etc)
- Selected fellows will have the same rights and duties as the host staff. Data protection issues and intellectual property rights will be treated equally for fellows and other co-workers.

10 The selection process for fellows under the program

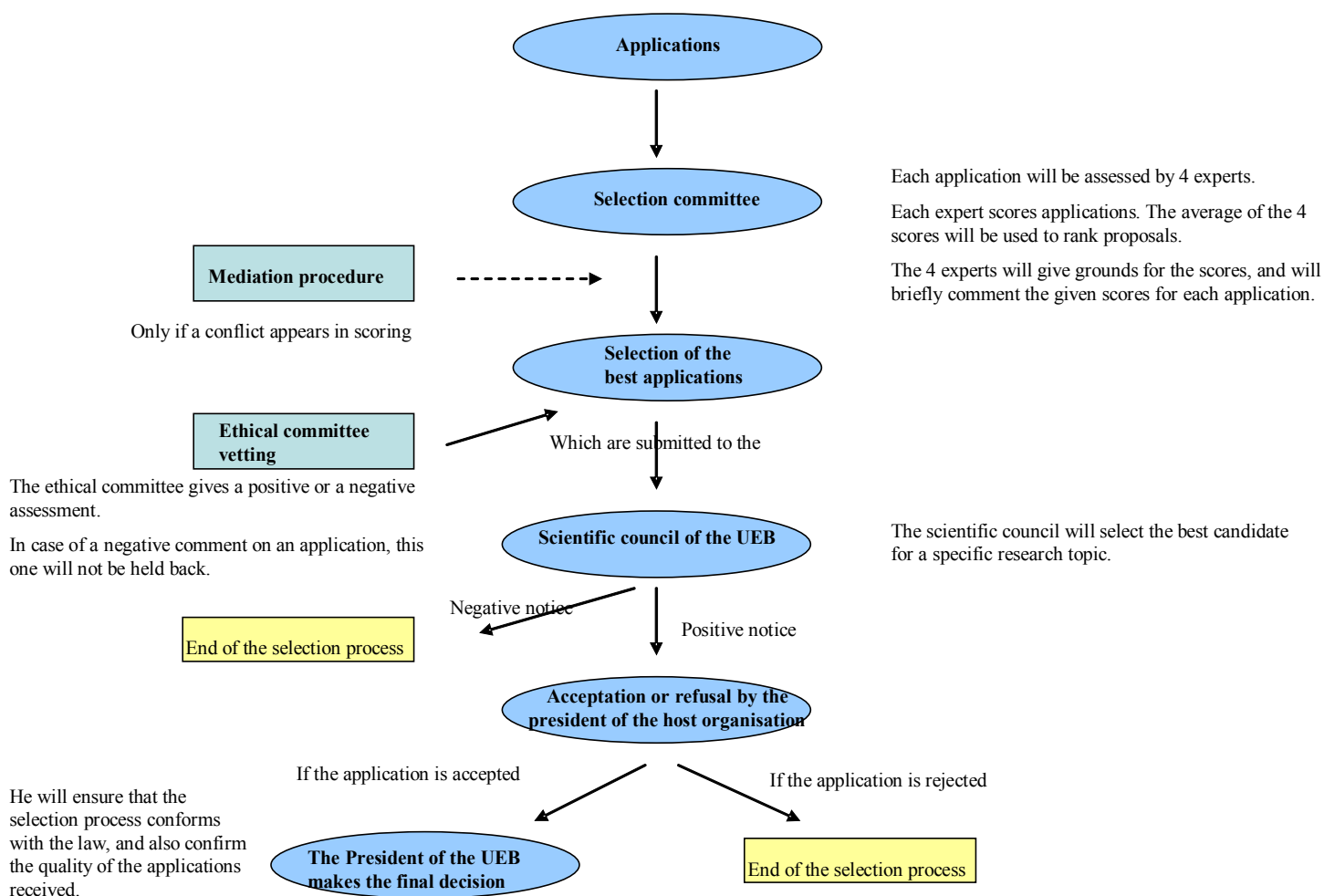
The RBUCE WEST program offers a high level scientific environment for fellows in particular academic contexts meeting two main expectations:

- enhancing or reinforcing existing research in a given context.
- creating or initiating a new research theme.

The main priority is excellence. The ratio of men/women is not taken into account during the evaluation process. Nevertheless, the participation of women will be encouraged and experts will be asked to examine their applications with particular care, especially in the “practical arrangements” section of the impact/implementation criteria. Arrangements that will be of particular interest include: part-time facilities, children care, etc.

10.1 Short overview of the selection process

Selection of the fellow applicants



A panel of 4 experts per research area

All research areas would be covered. For each research topic (e.g. social science), 4 experts having a strong experience in that area (social science in this example) will be appointed to rate the applications. For other applications dealing with marine biology, another group of 4 experts will be appointed.

Among these 4 experts,

- 2 will be independent experts (chosen from the CPU database or external universities' databases...) external to the PRES UEB. Both experts be required to sign a declaration of non-conflict of interest.
- 1 expert will be appointed by the President/Director of the host institution
- 1 expert will be appointed by the host laboratory director

Each expert scores the applications

Each application is forwarded to 4 experts. Each expert gives a score, according to evaluation criteria. The average of the 4 scores will be used to rank proposals. In case of a significant difference between scores, the coordinator will organise a mediation procedure by way of a new assessment by another expert, and/or communication between experts, etc.

Example:

If 10 applications are submitted in marine biology, 4 experts will independently score the 10 applications. The average of the 10 scores will be used to rank the 10 applications from 1 (application with the highest score) to 10 (application with the lowest score).

The coordinator (UEB Vice-President for European and International affairs or her/his successor) submits the ranking to the scientific council of the UEB for information purposes. After examination of the advice from the ethical committee (composed of four members appointed by the scientific council of the UEB), after acceptability by the lab director and the president of the host organization, the final decision is taken by the UEB president before being forwarded to the host institution.

The ethical board

An ethical board is included in the program's governance. The ethical board consists of four experts from the scientific council of the UEB. The tasks of the board will also be to take care of ethical issues that might arise within the researcher's programs.

This board's task will be to make sure that all programs that might be funded within the perimeter of the actual proposal are compliant with both the national and European standards and laws concerning ethical issues.

As seen before, during the selection process, the selection committee will have to check with the ethical board that FP7 ethical rules duly complied with (see appendix 3).

10.2 Selection of the applicants

Applicants are selected solely on the basis of their academic record. There are no quotas for individual disciplines or countries.

EVALUATION CRITERIA, THRESHOLDS AND WEIGHTINGS FOR EACH APPLICATION UNDER THE R BUCE WEST PROGRAM

S&T Quality (award) Weighting:33,33%	Researcher (award) Weighting:33,33%	Expected impact Weighting:33,33%
Research/technological quality, including any interdisciplinary and multidisciplinary aspects of the proposal	Research experience	Potential for knowledge transfer to European host and/or transfer of knowledge to Europe
Appropriateness of research methodology and approach	Research results including patents, publications, teaching etc.	Contribution to Brittany's research influence at international level
Originality and innovative nature of the project, and relationship to the 'state of the art' of research in the field	Independent thinking, leadership qualities, and capacity to transfer knowledge	Contribution to EUB research works
Timeliness and relevance of the project	Match between the fellow's profile and project.	Potential for creating long term cooperation between the former host institution and the new host institution
Feasibility and credibility of the project, including work plan	Human qualities of the fellow researcher, ability to work in a team	Clarity and quality of the transfer of knowledge objectives
	Motivations for a 24-month-fellowship	Acquisition of new competencies

S&T Quality criteria will assess the research potential, including interdisciplinary approach, methodology, originality (e.g.: compared to the state of the art), timeliness, etc, with regard to the expertise of the host team and supervisors.

Researcher Quality will assess the applicant's experience in research, including publications, patents, teaching, conferences... but also if his/her profile matches with the program expectations. The researchers' ability to acquire new knowledge and develop independent methods will also be taken into account.

Transfer of knowledge will assess the capacity of applicants to accept and develop industry/academia cooperation, active participation in the scientific and financial management of research programs, participation in the organization of training or dissemination events and/or entrepreneurship skills. Keywords of the common selection criteria are excellence, human qualities, and ability to perform research in a working group context.

Impact and implementation will assess the contribution to European excellence, the fellow's career development, the contribution to regional and academic areas priorities; the host infrastructures, facilities, and program management skills.

For the needs of our specific approach, the selection committee shall pay particular attention to identifying applicants who are able to perform high level research in the close human context required by a fertile scientific environment.

Knowledge of French and/or English will be an asset.

10.3 Information for the applicants about the evaluation results

The lists of positively evaluated (A list) applications will be published. A ranked reserve list may be used (B list). The UEB will contact the applicants on the A list to determine if all the selected applications will lead to a fellowship or not and if there is a need to use the B list.

Each candidate will personally and duly receive his/her evaluation result and report within 2 months of the review of his/her application by the selection committee. Each candidate will be able to ask the coordinator any request for further explanations or appeal against the decision; all of them will be examined and a feedback will be sent to the candidate.

All general information will be published on the R BUCE WEST website.

Appeals against assessment must be addressed to Maurice Baslé:

 UNIVERSITÉ EUROPÉENNE DE BRETAGNE	<p>Maurice Baslé R BUCE WEST legal coordinator UEB Vice-President for international and European affairs 5 boulevard Laënnec – 35000 Rennes – France</p>
--	---

11 Expected timeline

Publication of the 3 rd call	22 July – 25 September 2011	www.rbucewest.ueb.eu
Expert committee nomination	October 2011	Experts will be appointed by the UEB scientific council
Creation of an ethical board	October 2011	
Selection of the best applications	October- November- December 2011	
Selection of the best application per research area by the scientific council of the UEB	January 2012	
Approval/ refusal by the host organization	January 2012	
Publication of the list of the selected applicants (lists A and B and unsuccessful candidates)	1-8 February 2012	The results will be posted on the UEB website www.rbucewest.ueb.eu
Individual evaluation result	8 April 2012	Each candidate will receive his/her evaluation result by email by this date at the latest.
First arrivals of the selected researchers	To be freely chosen by the fellow applicant. Latest arrivals by 1 April 2012	All information will be posted on the UEB website www.rbucewest.ueb.eu

As the R BUCE WEST program is co-financed by the European Commission for a specific 4-year period from 1 May 2011 until 30 April 2014, all fellowships have to be completed by 30 March 2014 in order to be eligible.

Fellowships starting date: to be freely chosen by the fellow applicant, but no later than 1 April 2012. For successful applications, the fellowship starting date will be renegotiated between the fellow applicants and the host institutions.